

EPILEPSY FOUNDATION OF FLORIDA, INC.
FINANCIAL SUMMARY
YEARS ENDED JUNE 30, 2017 AND 2016

	Year Ended June 30, 2017	Year Ended June 30, 2016
SUPPORTING SERVICES PERCENTAGES:		
MANAGEMENT AND GENERAL	\$ 192,814	\$ 182,200
FUNDRAISING	239,792	196,840
TOTAL SUPPORTING SERVICES	<u>432,606</u>	<u>379,040</u>
TOTAL SUPPORT AND REVENUE	<u>4,965,757</u>	<u>4,809,523</u>
SUPPORTING SERVICES PERCENT OF REVENUE	8.7%	7.9%
TOTAL EXPENSES	<u>4,938,058</u>	<u>4,807,025</u>
SUPPORTING SERVICES PERCENT OF EXPENSE	8.8%	7.9%

WHERE DO THE DOLLARS RAISED GO?		
TOTAL SUPPORT AND REVENUE	<u>4,965,757</u>	<u>4,809,523</u>
PATIENT SERVICES	3,098,882	3,037,670
PREVENTION & EDUCATION SERVICES	1,406,570	1,390,315
FUNDRAISING	239,792	196,840
MANAGEMENT & GENERAL	192,814	182,200
CHANGE IN NET ASSETS	27,699	2,498
<u>AS A % OF SUPPORT AND REVENUE</u>		
PATIENT SERVICES	62.4%	63.2%
PREVENTION & EDUCATION SERVICES	28.3%	28.9%
FUNDRAISING	4.8%	4.1%
MANAGEMENT & GENERAL	3.9%	3.8%
NET ASSETS	<u>0.6%</u>	<u>0.0%</u>
	<u>100.0%</u>	<u>100.0%</u>

EXPENSES BY CATEGORY:AS A % OF EXPENSES

PATIENT SERVICES	62.8%	63.2%
PREVENTION & EDUCATION SERVICES	28.5%	28.9%
FUNDRAISING	4.8%	4.1%
MANAGEMENT & GENERAL	3.9%	3.8%
	<u>100.0%</u>	<u>100.0%</u>

REVENUE BY CATEGORY:

GRANTS	\$ 3,543,521	\$ 3,206,935
CONTRIBUTIONS	363,609	545,481
CLAYTON FEIG FUND	50,732	37,338
UNITED WAY	88,125	83,404
SPECIAL EVENTS	474,755	530,639
IN-KIND MEDICAL SERVICES	409,064	390,759
FEES & OTHER INCOME	35,951	14,967
	<u>4,965,757</u>	<u>4,809,523</u>

AS A % OF SUPPORT AND REVENUE

GRANTS	71.4%	66.7%
CONTRIBUTIONS	7.3%	11.3%
CLAYTON FEIG FUND	1.0%	0.8%
UNITED WAY	1.8%	1.7%
SPECIAL EVENTS	9.6%	11.0%
IN-KIND MEDICAL SERVICES	8.2%	8.1%
FEES & OTHER INCOME	0.7%	0.4%
	<u>100.0%</u>	<u>100.0%</u>

**EPILEPSY FOUNDATION OF FLORIDA, INC.
 FINANCIAL SUMMARY
 YEARS ENDED JUNE 30, 2017 AND 2016**

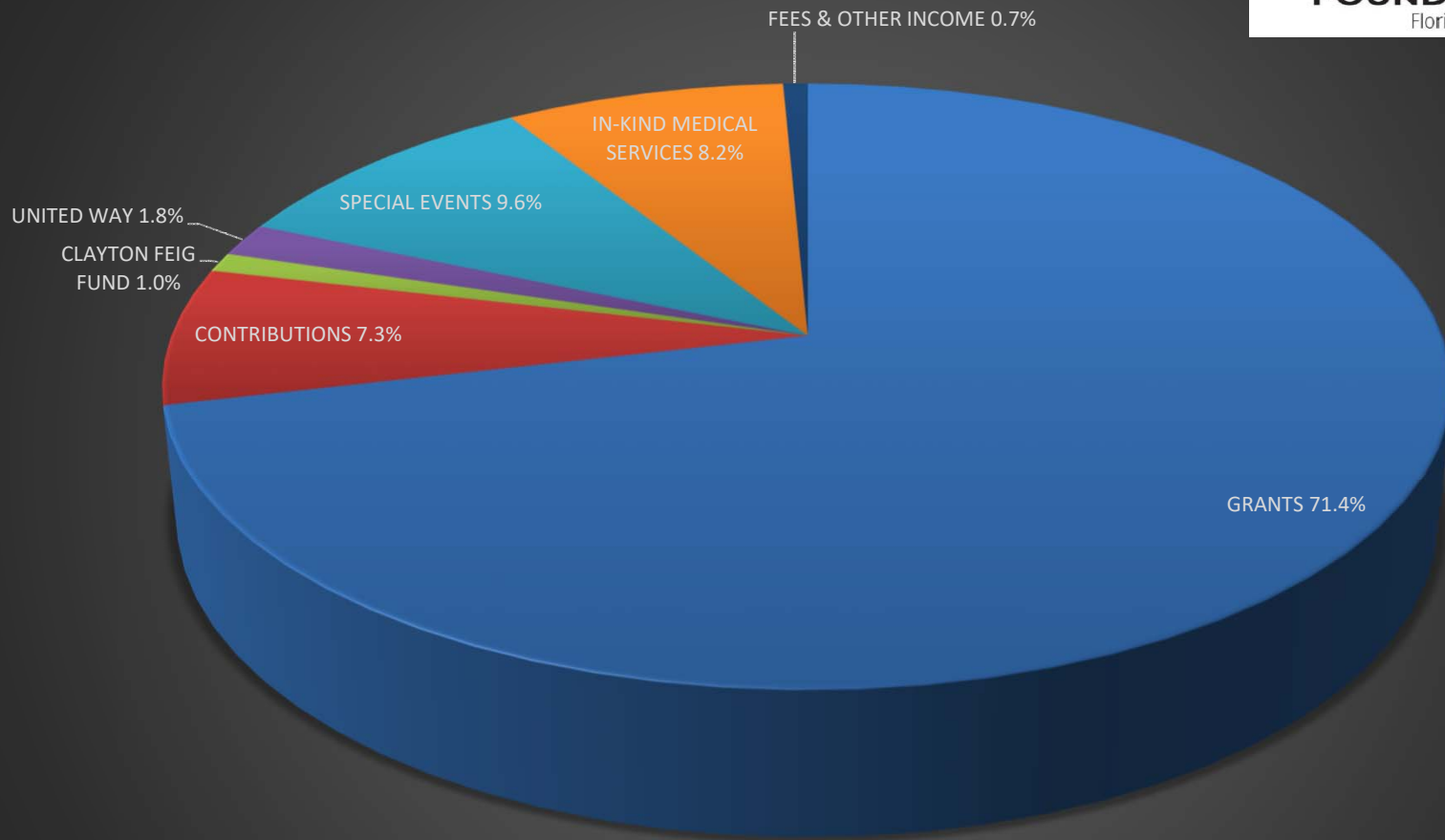
	Year Ended June 30, 2017	Year Ended June 30, 2016
SUPPORTING SERVICES PERCENTAGES:		
SUPPORTING SERVICES PERCENT OF REVENUES	8.7%	7.9%
SUPPORTING SERVICES PERCENT OF EXPENSES	8.8%	7.9%

WHERE DO THE DOLLARS RAISED GO?		
PATIENT SERVICES	62.4%	63.2%
PREVENTION & EDUCATION SERVICES	28.3%	28.9%
FUNDRAISING	4.8%	4.1%
MANAGEMENT & GENERAL	3.9%	3.8%
CHANGE IN NET ASSETS	0.6%	0.0%
	<u>100.0%</u>	<u>100.0%</u>

EXPENSES BY CATEGORY:		
PATIENT SERVICES	62.8%	63.2%
PREVENTION & EDUCATION SERVICES	28.5%	28.9%
FUNDRAISING	4.8%	4.1%
MANAGEMENT & GENERAL	3.9%	3.8%
	<u>100.0%</u>	<u>100.0%</u>

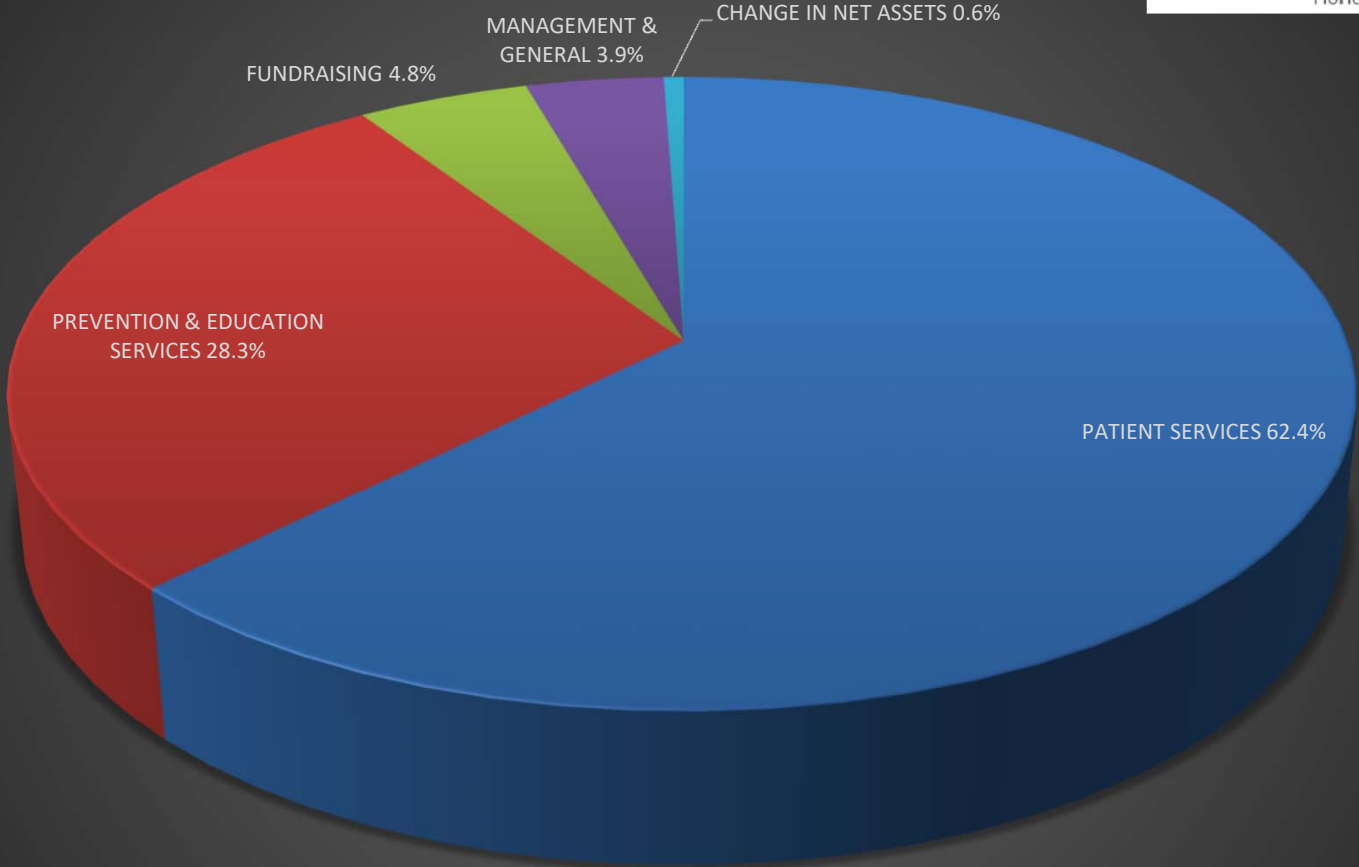
REVENUE BY CATEGORY:		
GRANTS	71.4%	66.7%
CONTRIBUTIONS	7.3%	11.3%
CLAYTON FEIG FUND	1.0%	0.8%
UNITED WAY	1.8%	1.7%
SPECIAL EVENTS	9.6%	11.0%
IN-KIND MEDICAL SERVICES	8.2%	8.1%
FEES & OTHER INCOME	0.7%	0.4%
	<u>100.0%</u>	<u>100.0%</u>

Revenue By Category Year ended June 30, 2017



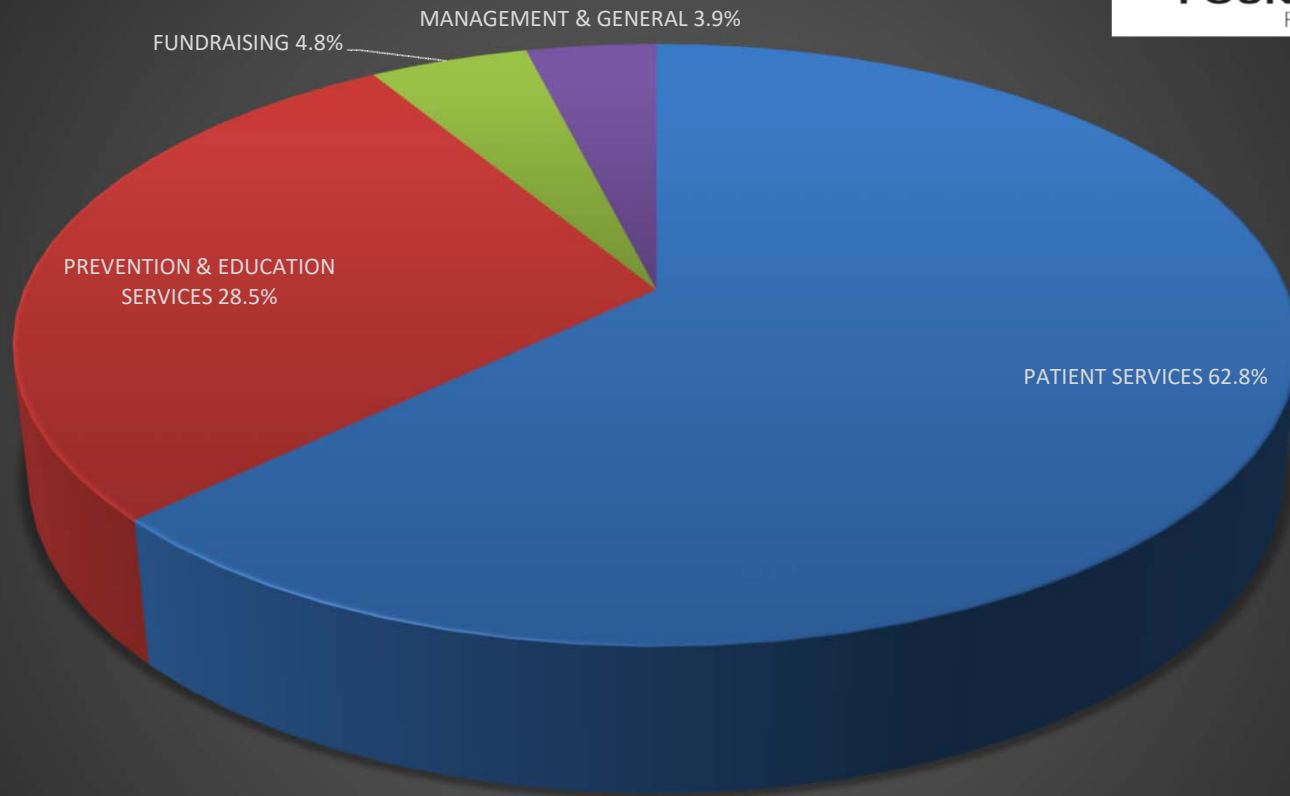
GRANTS CONTRIBUTIONS CLAYTON FEIG FUND UNITED WAY SPECIAL EVENTS IN-KIND MEDICAL SERVICES FEES & OTHER INCOME

Where Do The Dollars Raised Go? Year ended June 30, 2017



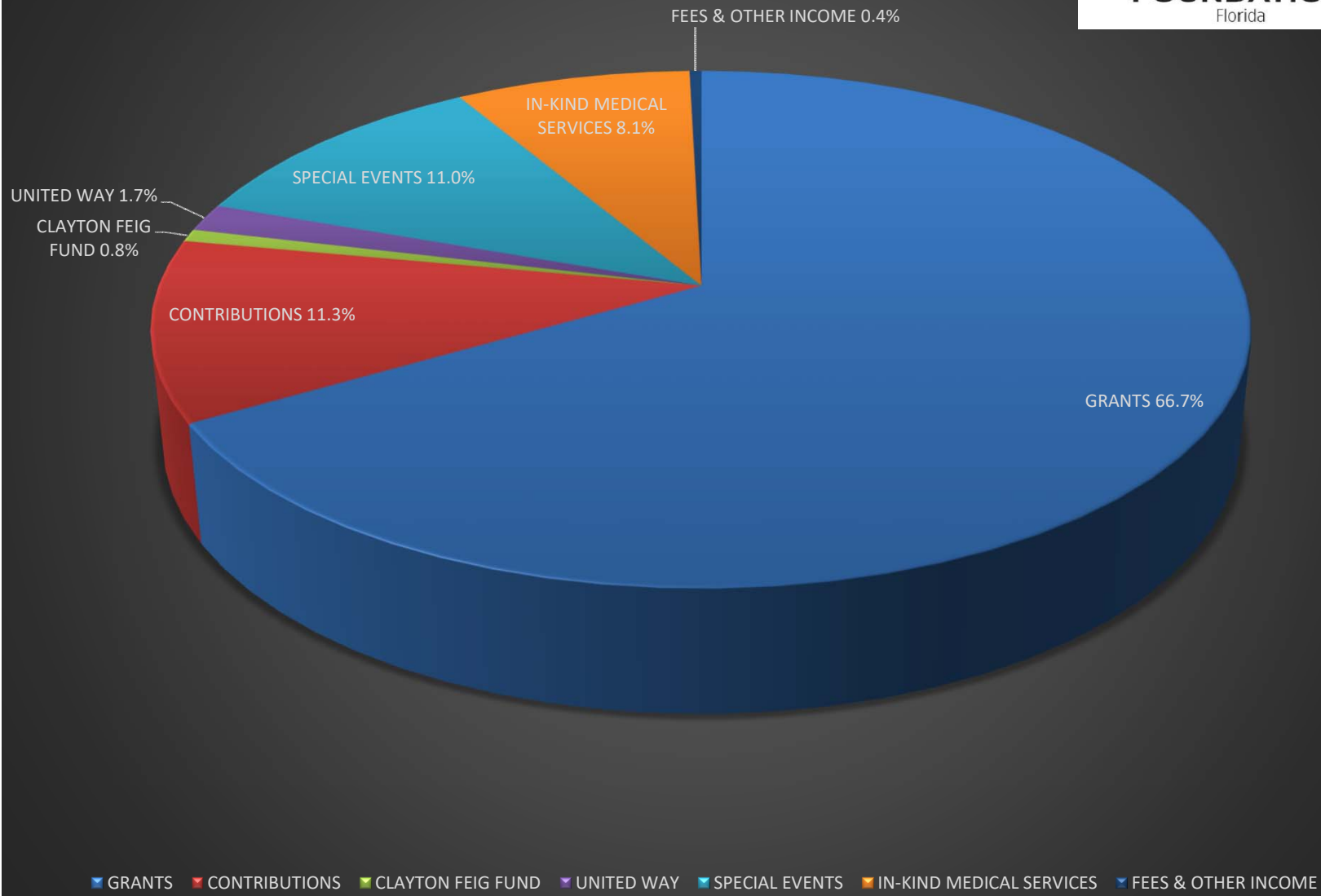
■ PATIENT SERVICES ■ PREVENTION & EDUCATION SERVICES ■ FUNDRAISING ■ MANAGEMENT & GENERAL ■ CHANGE IN NET ASSETS

Expenses By Category June 30, 2017

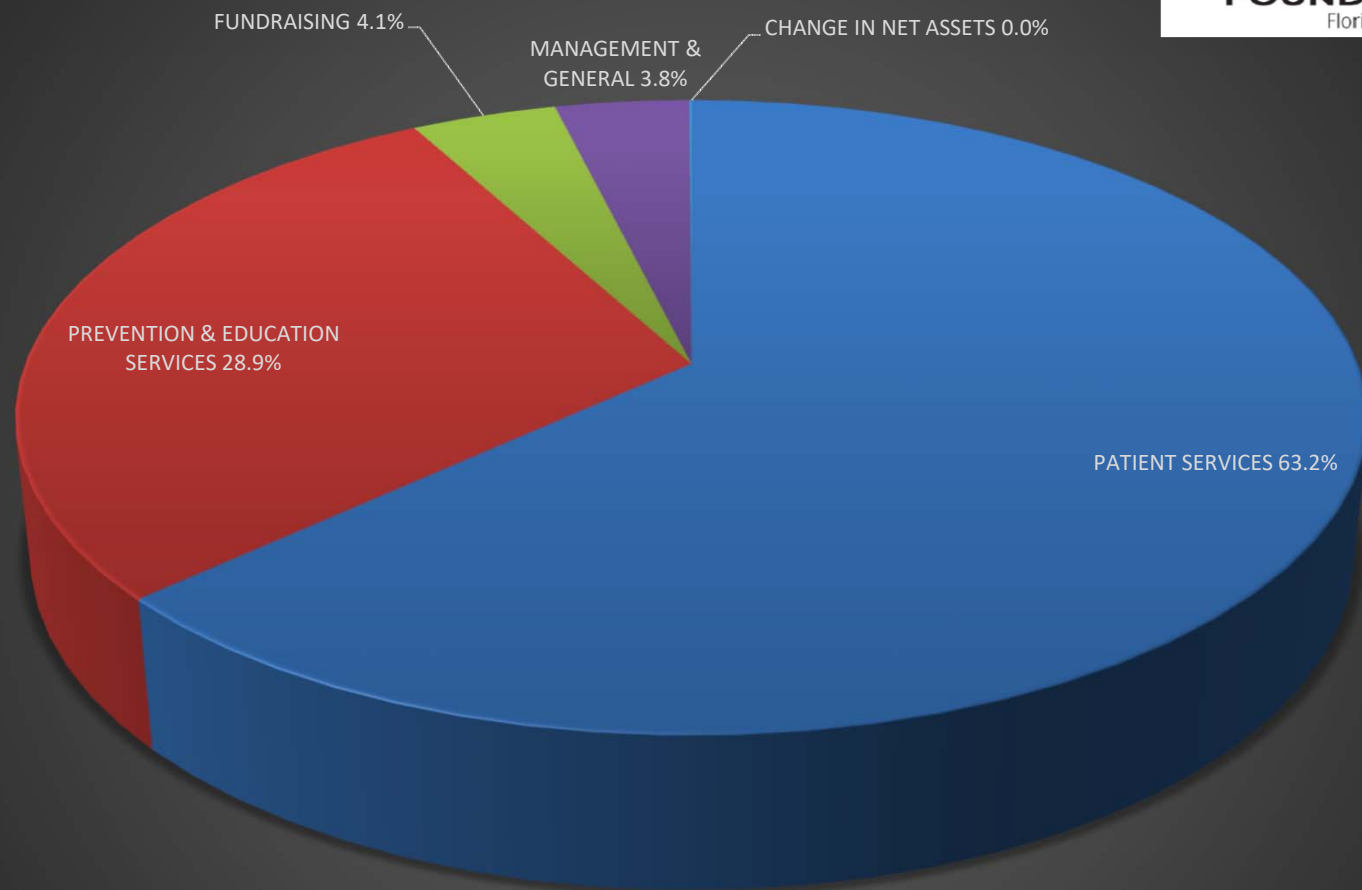


■ PATIENT SERVICES ■ PREVENTION & EDUCATION SERVICES ■ FUNDRAISING ■ MANAGEMENT & GENERAL

Revenue By Category Year ended June 30, 2016

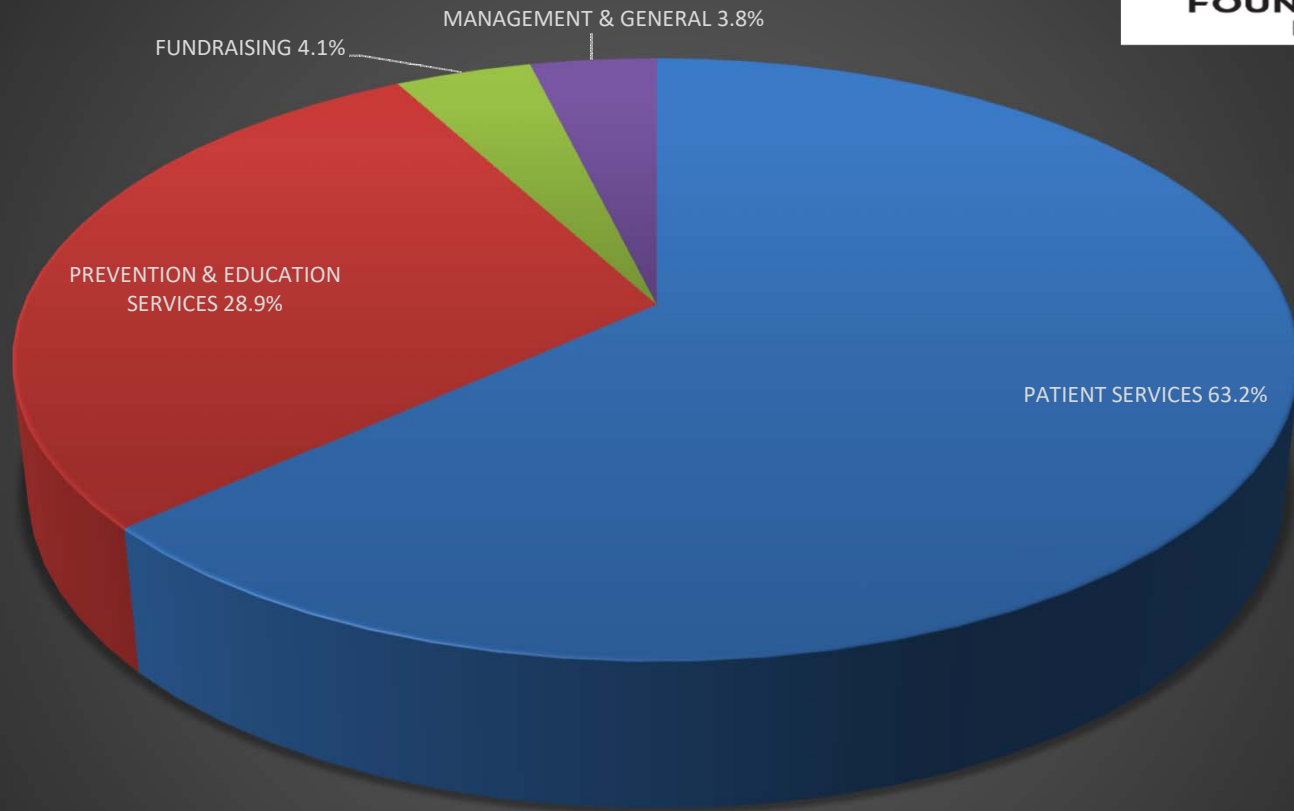


Where Do The Dollars Raised Go? Year ended June 30, 2016



■ PATIENT SERVICES ■ PREVENTION & EDUCATION SERVICES ■ FUNDRAISING ■ MANAGEMENT & GENERAL ■ CHANGE IN NET ASSETS

Expenses By Category June 30, 2016



■ PATIENT SERVICES ■ PREVENTION & EDUCATION SERVICES ■ FUNDRAISING ■ MANAGEMENT & GENERAL